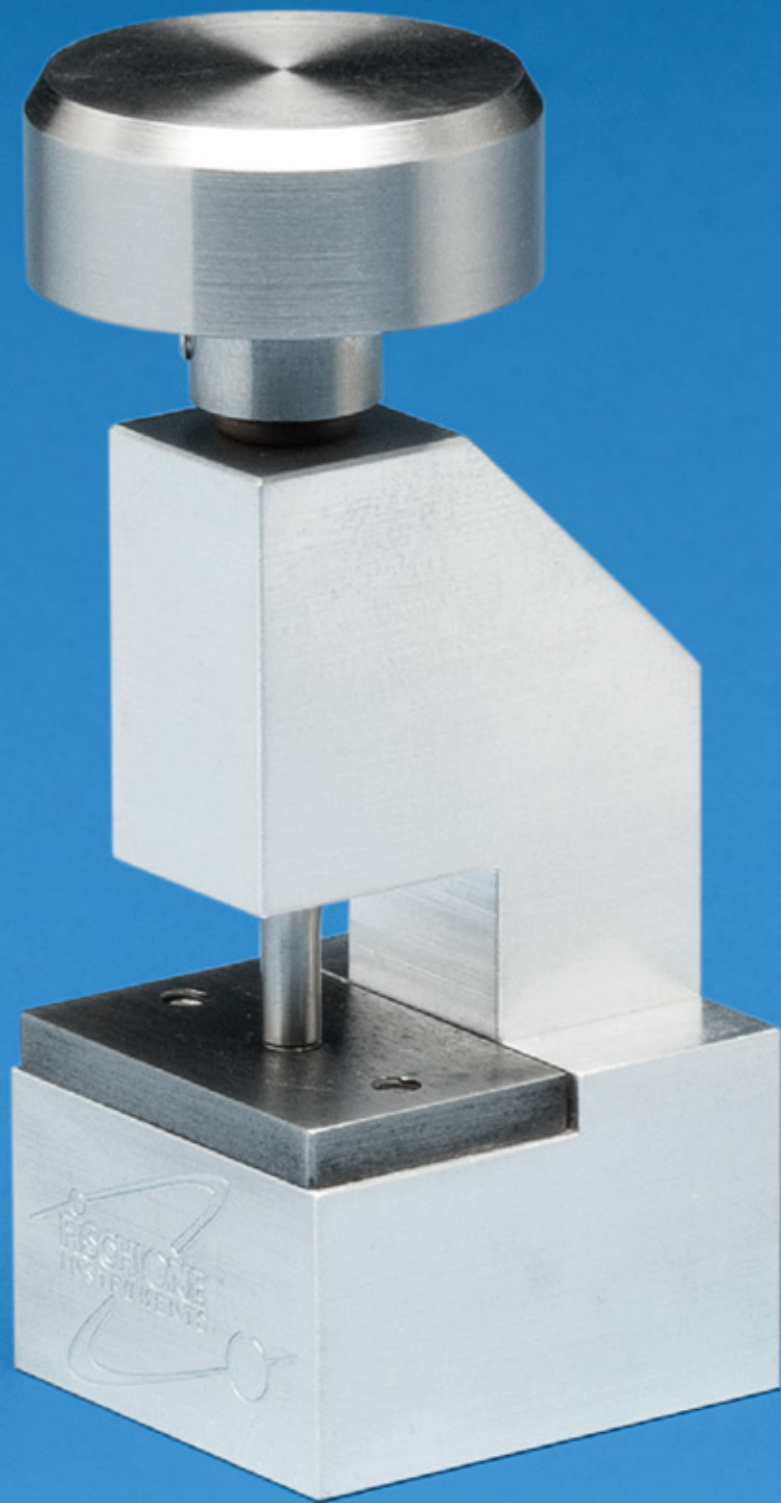


MODEL 130



## Specimen Punch

A precision ground punch and die plate eliminate specimen stress and distortion





# MODEL 130

## Specimen Punch

The Model 130 Specimen Punch produces high-quality disk specimens from thin metal foils.

- **A precision ground punch and die plate eliminate specimen stress and distortion**
- **A spring-loaded return plunger keeps the disk specimen on the die plate surface for convenient handling**
- **Available in standard sizes of 1 mm, 2.3 mm, and 3.0 mm**
- **Other sizes available upon request**

### DISK SPECIMENS FROM THIN FOILS

The Model 130 Specimen Punch is an ideal accessory to the Fischione Model 110 Automatic Twin-Jet Electropolisher.

The specimen punch is available with a standard base or with a wide base, which provides extra stability when producing thin foils. The specimen punch without a base is shown on the cover, the specimen punch with a base is shown above.



E.A. Fischione Instruments, Inc.  
9003 Corporate Circle  
Export, PA 15632 USA  
Tel: +1.724.325.5444  
Fax: +1.724.325.5443  
info@fischione.com  
www.fischione.com